

MINUTES

Meeting: TROWBRIDGE AREA BOARD
Place: Council Chamber - County Hall, Trowbridge BA14 8JN
Date: 19 January 2017
Start Time: 7.00 pm
Finish Time: 9.20 pm

Please direct any enquiries on these minutes to:

Becky Holloway 01225 718063 becky.holloway@wiltshire.gov.uk, Tel: 01225 718063
or (e-mail) becky.holloway@wiltshire.gov.uk

Papers available on the Council's website at www.wiltshire.gov.uk

In Attendance:

Wiltshire Councillors

Cllr Nick Blakemore, Cllr Ernie Clark, Cllr Dennis Drewett, Cllr John Knight,
Cllr Stephen Oldrieve and Cllr Graham Payne (Chairman)

Wiltshire Council Officers

Mary Cullen, Community Engagement Manager
Emma Drage, Locality Youth Facilitator
Becky Holloway, Democratic Services Officer
Kieran Elliot, Senior Democratic Services Officer

Town and Parish Councillors

Trowbridge Town Council – D T Bates, G Paulman, B Brice, P Fuller
Hilperton Parish Council – K Jackson

Partners and working groups

Wiltshire Police – Sgt Louis McCoy
Wiltshire Fire and Rescue Service – Andy Green
Trowbridge Community Area Future – Lindsey Millen
Trowbridge Area Board HWB Centre Working Group – Colin Kay

Total in attendance: 40

<u>Agenda Item No.</u>	<u>Summary of Issues Discussed and Decision</u>
1	<p><u>Apologies</u></p> <p>Apologies for absence were received from Cllr Horace Prickett and Cllr Chris Auckland</p>
2	<p><u>Minutes</u></p> <p>The Community Engagement Manager requested the following amendment by made to paragraph 74 ii. of the minutes of the meeting of Trowbridge Area Board on 10 November 2016.</p> <p>The decision should read as follows: <i>The area board awarded the sum of £5000 to Trowbridge Town Council for enhancement of Christmas Lights.</i></p> <p>Resolved: To agree and sign the minutes of the meeting of Trowbridge Area Board held on Thursday 10 November 2016, subject to the changes requested by the Community Engagement Manager.</p>
3	<p><u>Declarations of Interest</u></p> <p>The Chairman, Cllr Graham Payne, declared a non-pecuniary interest in the youth grant application made by the Sea Cadets, and explained that he would not take part in the discussion or vote on this item.</p> <p>Cllr Dennis Drewett declared a non-pecuniary interest in item 6b2, the grant application made by Trowbridge Town Hall. He explained he would speak but not vote on this item.</p> <p>Cllr John Knight also declared a non-pecuniary interest in item 6b2.</p>
4	<p><u>Chairman's Announcements</u></p> <p>The Chairmen drew the meeting's attention to the notices in the agenda pack. He also shared with members an update he'd received with regards to the Innox Mills development which reported: that the majority of surveys had been returned and many community representatives and interest groups had fed into the consultation process; that potential occupiers were being sought; and that it was hoped a public exhibition would be held in summer 2017.</p> <p>The Chairman explained that he had asked for items 11 and 12 to be taken before item 5 and that they would be delivered jointly between Wiltshire Council and the CCG.</p>

Trowbridge Health and Wellbeing update

Cllr John Thomson outlined the work taking place in Trowbridge and explained that the following two presentations were closely linked, with the central focus on bringing people together to make better use of existing assets and to pool resources to meet the health and wellbeing needs of Trowbridge and its surrounding parishes.

5

Strategic Healthcare Planning and Strategic Outline Case

Steve Perkins, Chief Finance Officer and Dr Lucy Thompson, from the NHS Wiltshire Clinical Commissioning Group, delivered a presentation on the Strategic Healthcare Planning and Strategic Outline Case being undertaken in Trowbridge.

The CCG has commissioned a strategic healthcare plan to look at the provision of services across Chippenham, Melksham and Trowbridge over the next ten years and to identify the required estates infrastructure to support this. This would take account of the anticipated increase required in primary care space and associated demographic changes. Of particular emphasis was the need for more and better out-of-hospital community care options. The four stages of the project were presented with the outcome of the initial stages (a Strategic Outline Case) anticipated to be reported to the CCG's Governing Body in spring 2017. Opportunities for stakeholder engagement and consultation would be developed.

The second part of the presentation related to the specific partnership between the CCG and Wiltshire Council to invest £3.8million in a new Trowbridge development to meet the health needs of the planned growth in the Trowbridge area. It was explained that this would be planned in conjunction with the current provision available through Trowbridge hospital.

6

One Public Estate/Health and Wellbeing centre

Cllr John Thomson provided an update on the Trowbridge Health and Wellbeing Centre proposals. He explained that in addition to the funding secured by the CCG, there had been two phases of funding received from national government under the umbrella of One Public Estate. Each phase had totalled £350k, with £90k allocated to Trowbridge on each occasion.

Cllr Thomson reported that the feedback they'd received from the government about their use of the funding had been very positive and gave an example of the purchase of Rothermere House (the adjoining site) to aid with the council's control of access to the new build, and that working within the One Public Estate umbrella had made this process a great deal more straightforward. Initial discussions had also taken place with Sport England about incorporating a leisure aspect into the development. A report on the project to date had been approved by the Council Capital Assets Committee on 15 November 2016 and work on the East Wing site was due to start in Autumn 2017.

	<p>The Chairman thanked all the speakers for their presentations and invited questions from the floor.</p> <p>In response to questions, the following points were made or clarified:</p> <p>That a feasibility study had been commissioned to see what health and wellbeing provision was needed in the town, and that the results of this would be used to ensure the proposed development could accommodate all the essential aspects, it would then be clearer what space could be used for leisure facilities and at this stage consultation would be done with the Area Board through the Chairman.</p> <p>That a lot of improvement work had been done in Trowbridge in recent years including new leisure provision, but that this remained a priority and that Sport England had agreed to fund a feasibility study for how leisure could fit with the existing facilities.</p> <p>That proposals for the site would be likely to include a number of proposals and that these would come back to the Cabinet Capital Assets Committee for their consideration.</p> <p>The Chairman reminded members that they had been offered an appraisal of progress and sight of any plans by the end of February 2017 and that there would be opportunity to ask further questions at that time.</p> <p>Cllr Thomson added that specific questions could be submitted in writing, and that it was the intention of the working group to invite the Trowbridge CEM to attend their meetings.</p>
7	<p><u>Partner Updates</u></p> <p>The Chairman drew to the attention of members the written partner updates in the agenda pack and invited partners to provide verbal reports in addition to these.</p> <p>i. Wiltshire Police</p> <p>Sgt Louis McCoy presented the written update, highlighting the work of Operation Saffron and work done to tackle recent garage break-ins. He then provided an overview of local approaches to tackling Anti-Social Behaviour (ASB) reduction including a new public space protection order to target alcohol prevention and the establishment of a new working party to review the Trowbridge ASB policy. It was noted that Mark Hough would be leaving the force and would be replaced by Alex Andrew. Members passed on their appreciation of Mark Hough's work and said that he would be much missed.</p> <p>ii. Wiltshire Fire and Rescue Service</p> <p>Andy Green presented his written report, and highlighted the sessions about fire awareness and safety recently run in schools in the Trowbridge area. He drew to</p>

	<p>members' attention the Community Safety Plan available on the fire service's website.</p> <p>iii. NHS Wiltshire The written updates were noted. There were no further updates.</p> <p>iv. Trowbridge Community Area Future (TCAF) Lindsey Millen gave a verbal update on the recent work of TCAF including a drop in session at John o Gaunt school and some planned events for young people.</p> <p>v. Town and Parish Councils The written update from Trowbridge Town Council was noted, and it was confirmed in response to questions that Trowbridge squash court had made a request for new premises and that funding from the town council had been allocated to providing floodlights for the proposed new tennis courts.</p> <p>Working groups:</p> <p>i. Trowbridge Area Board Health and Wellbeing Centre working group The written update was noted and Colin Kay reported that he had met with Wiltshire Council officers to discuss the leisure provision aspect of the health and wellbeing centre for Trowbridge, and that they were looking forward to seeing plans become realised. Further consultation would take place through either himself or the chairman of the Area Board.</p>
8	<p><u>Funding</u></p> <p><u>Community Area Grant Scheme</u></p> <p>The Area Board was considered three applications to the Community Area Grant Scheme:</p> <ul style="list-style-type: none"> • A request for £596.50 from the College Estate Residents Association to purchase a Brush cutter for their community garden. • A request for £998.00 from Trowbridge Carnival Committee for the purchase of equipment related to running the Carnival Procession. • A request for £3000.00 from Alzheimers' Support for their 'Singing for the Brain' project. <p>Applicants were given an opportunity to speak to their applications.</p> <p>In response to questions it was clarified that Trowbridge carnival committee intended to hire the new equipment out to local groups for a small fee which would help with running costs; and that profits from the carnival were used to support charities selected by the committee.</p> <p>After a short debate regarding each of the applications, it was</p>

Resolved:

To award £596.50 to the College Estate Residents Association to purchase a Brush cutter for their community garden

To award £998.00 to Trowbridge Carnival Committee for the purchase of equipment related to running the Trowbridge Carnival Procession

To award £3000.00 to Alzheimers' Support for their Singing for the Brain project

Councillor-Led Initiative Grant Scheme

Members were asked to consider two applications to the Councillor-Led Initiative grant scheme.

- A request of £20,000.00 from Cllr Steve Oldrieve and Cllr Graham Payne for Trowbridge Park Sports Development Facilities
- A request for £9279.00 from Cllr John Knight for the restoration of the Trowbridge Town Hall Supper Room

Cllrs Knight, Oldrieve, and Payne had a opportunity to speak about their applications.

In response to questions, it was clarified that: the projected funding from household membership of the tennis courts had been guided by the LTC; there would be additional Section 106 funding and in-kind support for the Trowbridge Park development; and that the members were aware of how much had already been invested in the Town Hall but felt restoration of the Supper Room was a worthwhile project.

After some debate about both applications, it was:

Resolved:

To award £20,000.00 to Trowbridge Park Sports Development Facilities

To award £9279.00 to the friends of Trowbridge Town Hall for the restoration of the Town Hall Supper Room

Cllr Dennis Drewett wished it to be recorded that he had abstained from the voting in regards to the second motion.

9	<p><u>Local Youth Network Update and Applications for Youth Funding</u></p> <p>The Area Board was asked to consider the following recommendations of the Local Youth Network for approve five applications to the youth grant scheme.</p> <ul style="list-style-type: none"> • A request of £3150.00 from Go Fish for an employment skills project. • A request of £5000.00 from Trowbridge Sea Cadets for venue hire. • A request of £2500.00 from Youth For Christ for a mobile youth work project. • A request of £4814.30 from Wiltshire Youth Arts Company for their National Theatres Connections Project. • A request of £963.50 from Trowbridge Wanderers FC for the purchase of equipment. <p>In response to questions it was clarified that the application for the National Theatres programme was from the Youth Arts Company and not from TCAF as the agenda stated; that the football project would be delivered to the surrounding parishes as well as to young people from Trowbridge; and that there was £11,136.12 left in the youth grants budget. After discussion, it was</p> <p>Resolved:</p> <p>To award £3150.00 to Go Fish for an employment skills project.</p> <p>To award £5000.00 to Trowbridge Sea Cadets for venue hire.</p> <p>To award £2500.00 to Youth For Christ for a mobile youth work project.</p> <p>To award £4814.30 to Wiltshire Youth Arts Company for their National Theatres Connections Project.</p> <p>To award £963.50 to Trowbridge Wanderers FC for the purchase of equipment.</p>
10	<p><u>Community Area Transport Group</u></p> <p>The minutes from the CATG meeting of 5 January 2017 were noted. In response to a question, the Chairman confirmed that a decision regarding the highways programme of works would be deferred until after the local elections in May 2017, and that comments regarding the list should be submitted to the CATG.</p> <p>Resolved:</p> <p>To note the minutes of the CATG meeting of 5 January 2017</p>

11	<p><u>Police and Crime Commissioner update</u></p> <p>The Police and Crime Commissioner introduced a short video on the precept proposals for 2017/18.</p> <p>The Commissioner then spoke briefly about his work and took questions through the chairman.</p> <p>In response to questions, issues covered included: that the police force were currently undertaking a review of their assets but that there were no plans for the sale of Trowbridge police station; that new uses of technology including an improved website would provide greater capacity for responding to non-emergency calls; that there was no plan to reduce the number of PCSOs assigned to Trowbridge; and that recruitment and retention of 'specials' remained a priority for the force including recent investment in recruitment and training.</p> <p>The Chairman thanked the Commissioner for his presentation and wished him well with his visits to other Area Boards.</p>
12	<p><u>Wiltshire College</u></p> <p>Amanda Burnside, Principal of Wiltshire College delivered a presentation about the work of the college with specific emphasis on their delivery of apprenticeships.</p> <p>The principal provided an overview of the main and sub Wiltshire College campuses and how the Trowbridge campus fitted within the wider model. She reported that the college delivered vocational and work-based provision for the attainment of profession qualifications and as a progression route to higher education. The A350 corridor had been identified as a regional growth zone and delivery of high level apprenticeships was important for delivering Wiltshire's requirement for highly skilled workers, including those with technical and engineering skills in particular. Good partnerships with local universities had enabled the college to deliver HE courses and other key programmes delivered through Wiltshire College included military resettlement, and extended-curriculum placements for 14-16 year olds.</p> <p>The principal then took questions from the floor through the Chairman.</p> <p>In response to questions, the following points were made:</p> <p>That as well as specific subject skills, business management was an integral part of most course which helped students wishing to start their own companies.</p> <p>That provision for learners with special educational needs was judged to be of very good quality.</p>

	<p>That courses in the creative industries, including the Foundation Arts course for post A-Level students in Trowbridge and the Film degree in Salisbury were very popular with students from across the county and further afield going on to pursue successful careers.</p> <p>The Chairman thanked Amanda for her presentation.</p>
13	<p><u>Update from Community Engagement Manager, and feedback from JSA event</u></p> <p>The Community Engagement Manager fed back to the Area Board the outcomes from the Trowbridge Area Joint Strategic Assessment (JSA) event held on 5 December 2016. 120 members of the public had registered to attend, and a number of priority areas had been identified for the Trowbridge area.</p> <p>The Chairman thanked the CEM for all her work and asked that the film of the JSA event be circulated as widely as possible.</p>
14	<p><u>Urgent items</u></p> <p>There were no urgent matters</p> <p>The Chairman thanked everyone for coming and reminded members of the revised date for the next meeting of Trowbridge Area Board which would now be held on Thursday 9 March 2017 at 7pm.</p>

This page is intentionally left blank



One Public Estate / Health Update



Trowbridge Area Board 19 January 2017



One Public Estate - Objectives

- Cabinet Office initiative
- Public bodies deliver more integrated and customer focused services
- Create more economic growth
- Reduce costs
- Generate capital receipts through asset sales
- Regenerate towns and villages



One Wiltshire Estate -partners



Great Western
Hospitals
NHS Foundation Trust

Working in partnership with

Wiltshire Council
Where everybody matters

 South Western Ambulance Service
NHS Foundation Trust

pcc
Police & Crime Commissioner
for Wiltshire and Swindon

Royal United Hospital
Bath
NHS Trust



NHS
Property Services


Department
for Work &
Pensions

Avon and Wiltshire
Mental Health Partnership NHS Trust


swindonwiltshire
Local Enterprise Partnership

NHS
Wiltshire
Clinical Commissioning Group

**Strategic Healthcare Planning and Strategic
Outline Case:
Trowbridge, Melksham and Chippenham**

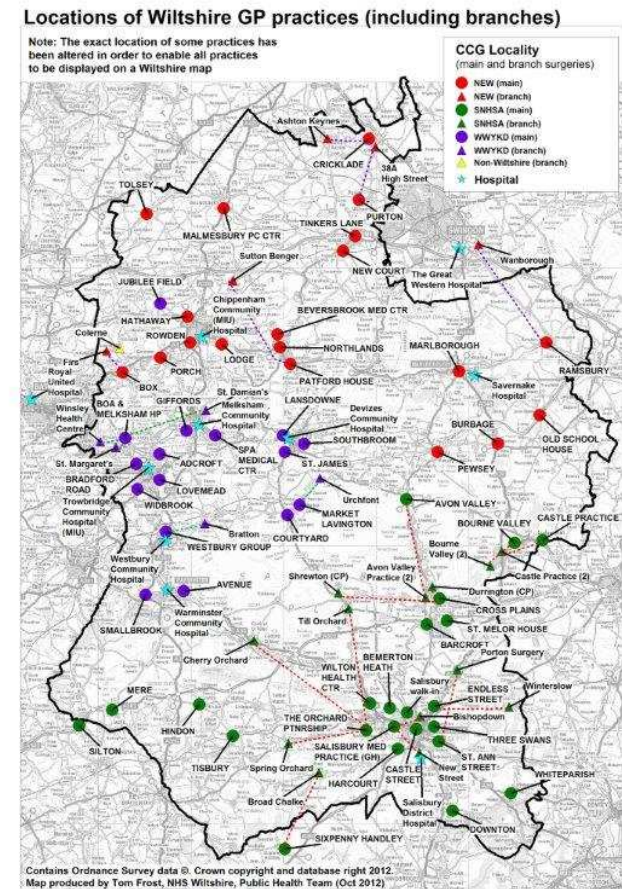
Steve Perkins, Chief Financial Officer
Lucy Thompson, GP Lovemead Group
19 January 2017

'The right healthcare for you, with you, near you.'



Wiltshire

- £585m health budget
- 55 GP practices
- A single CCG with 3 'locality' groups reflecting demography and geography of the county across Salisbury Plain
- 3 acute hospitals – Bath, Swindon, Salisbury
- 56 GP practices
- Out of Hours provider operating across the CCG
- Single Adult Services Community provider
- Single adult mental health provider
- Co-terminus with Wiltshire County Council



'The right healthcare for you, with you, near you.'

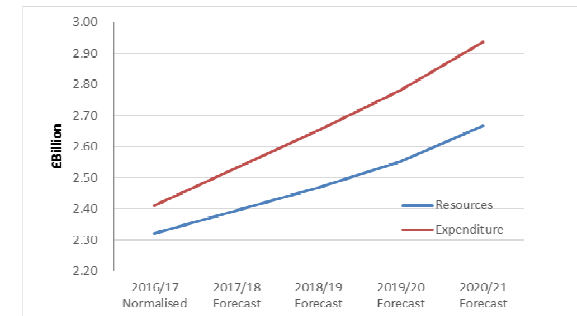


WORKING FOR CARERS

STP: BaNES, Swindon, Wiltshire

Local Pressures:

- 87.0% A&E 4 Hours 2015/16 (RUH, GWH & SFT combined)
- 90.8% RTT 18 weeks Incompletes 2015/16 (RUH, GWH & SFT combined)
- The 2015/16 financial outturn position for all health organisations within B&NES, Swindon & Wiltshire was a deficit of c£6m.
- If we do nothing to change how we deliver our services, the gap between available income and cost of services will rise to £337m per year by 2020/21

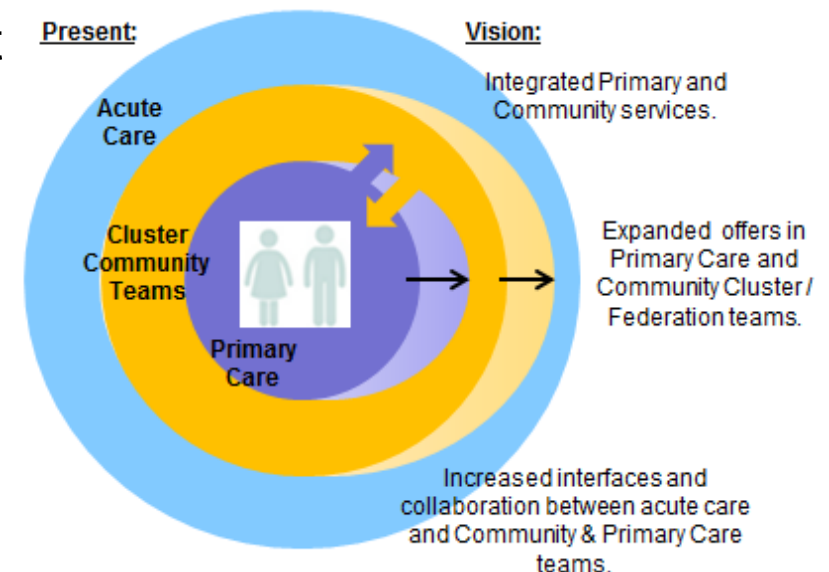


'The right healthcare for you, with you, near you.'

STP Vision

To provide improved person-centred care by:

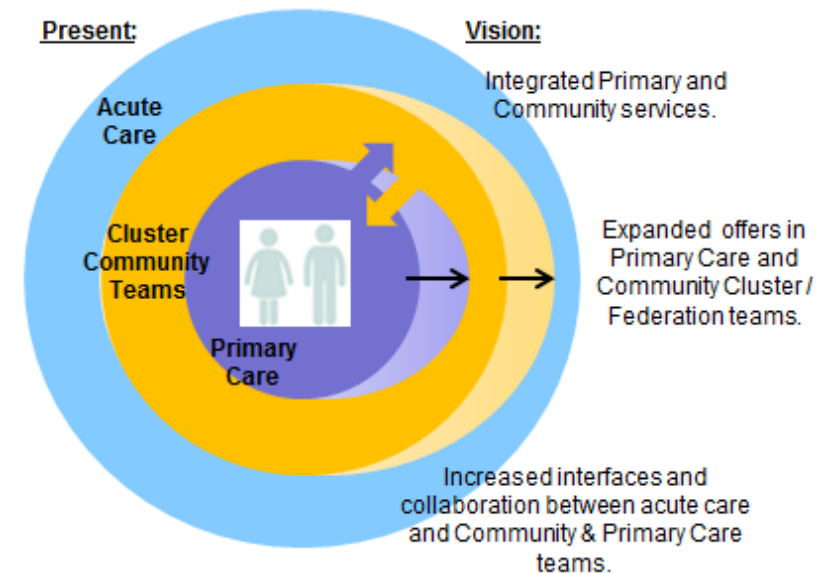
1. Strengthening and integrating the specialist services which support primary care and providing more community-based services via primary and community care teams
2. To shift the focus of care from treatment to prevention and proactive care;
 - Ageing Well
 - Healthy Lifestyles
 - Self Management
 - Specialist Support in the Community



'The right healthcare for you, with you, near you.'

STP Vision (cont)

- 3. To redefine the ways we work together as organisations to deliver improved individual/patient care – no more silo working.
- 4. To ensure we offer staff an attractive career and build a flexible, sustainable workforce.
- 5. To strengthen collaboration across organisations to directly benefit acute and urgent care services.



'The right healthcare for you, with you, near you.'



Challenges

- Health and social care challenges - demographic and financial challenges.
- Wiltshire vision is for care closer to home
- Urgent care demand is increasing
- GP Forward View – CCG responsible for commissioning to expand capacity ensuring plans in general practice dovetail with plans for single point of contact to integrated urgent care with access with OOH and reformed 111 and clinical hubs = 7 days
- Condition of current community hospital estate
- Challenge of primary care estate capacity
- Increase in population over next 10 years in relation to GMS space leaves a gap of over 8,000m²

'The right healthcare for you, with you, near you.'

SHP & SOC

NHS Wiltshire Clinical Commissioning Group has commissioned a Strategic Healthcare Planning and Strategic Outline case for the Towns of Trowbridge, Melksham and Chippenham.

This area of the County has a known under provision of General Practice space and poor quality community hospital accommodation.

This is a strategic exercise to determine projected service need through to 2027 and from this the buildings needed to provide these services across the 3 towns.

'The right healthcare for you, with you, near you.'

SHP & SOC

The Strategic Healthcare Planning exercise will identify the service need through to 2027 and will include for population growth.

Once the service need has been established the space required to provide these services will be developed.

The Strategic Outline Case will follow the Strategic Healthcare Planning. This exercise identifies a preferred way forward and is the first step in the business case process.

'The right healthcare for you, with you, near you.'

Where are we now?

**Stage 1:
Data Collection,
Mapping of Supply /
Demand**

- Stakeholder engagement
- Activity data collection
- Review of current estate including primary care facilities
- Utilisation reviews of key strategic assets

Forecast the future

**Stage 2:
Strategic Fit Analysis**

- Activity/Capacity modelling
- Demographic growth
- Housing development
- Deprivation
- Models of Care

Understand shortfalls

**Stage 3:
Gap Analysis & Option
Appraisal**

- Gap between current provision and future requirements
- Assessment of viability of shifts in models of care
- Defining scope of future services

Define future options

**Stage 4:
Strategic Outline Case**

Identified key potential opportunities

NHS Wiltshire Clinical Commissioning Group

This exercise is evidence based, open and transparent.

Includes a range of key stakeholders.....all GP practices in the towns and:

Page 23



'The right healthcare for you, with you, near you.'



Outcome

The end objective of this piece of work is to identify a preferred way forward for healthcare buildings across the 3 towns based on service need and accounting for population growth.

Reporting to NHS Wiltshire Clinical Commissioning Group's Governing Body spring 2017.

If approved by the Governing Body it is expected to form the basis for a programme of works across the 3 towns.

'The right healthcare for you, with you, near you.'

Trowbridge - ETTF

Trowbridge bid for NHS Estates and Technology Transformation Fund successful

£3.8m which will partially fund the scheme to be spent by March 2019

Due to time limited funding NHS progressing preferred Trowbridge site of East wing before completion of SHP & SOC

SHP & SOC will inform the services and space needs for the development

'The right healthcare for you, with you, near you.'

Trowbridge – East wing

Current NHS works:

Arcadis appointed as professional health development advisors

Site assessments and surveys being updated and new where required

Options appraisal on routes to development being developed.....Council lead, NHSPS, 3rd party developer, etc

Funding model being developed

'The right healthcare for you, with you, near you.'

Trowbridge – East wing (cont)

Current NHS works:

Schedule of Accommodation

Early architectural work on best location of the site for the building

Clinical service model being developed

Clinical adjacencies of departments

Services

This is evolving and will be informed by the SHP & SOC, but anticipated to include:

Replacement for Roundstone Surgery

Trowbridge under provision of Primary Care accommodation

Community services of the type currently provided at Trowbridge Community Hospital

'The right healthcare for you, with you, near you.'



Model of care

Under development as part of taking the project to Outline Business Case and aligned to:

GP 5 year forward view
Wiltshire CCG strategy
STP vision

Community-based out-of-hospital
Less reliance on acute facilities
Increased use of community health estate

'The right healthcare for you, with you, near you.'

One Wiltshire Estate

Update on Trowbridge



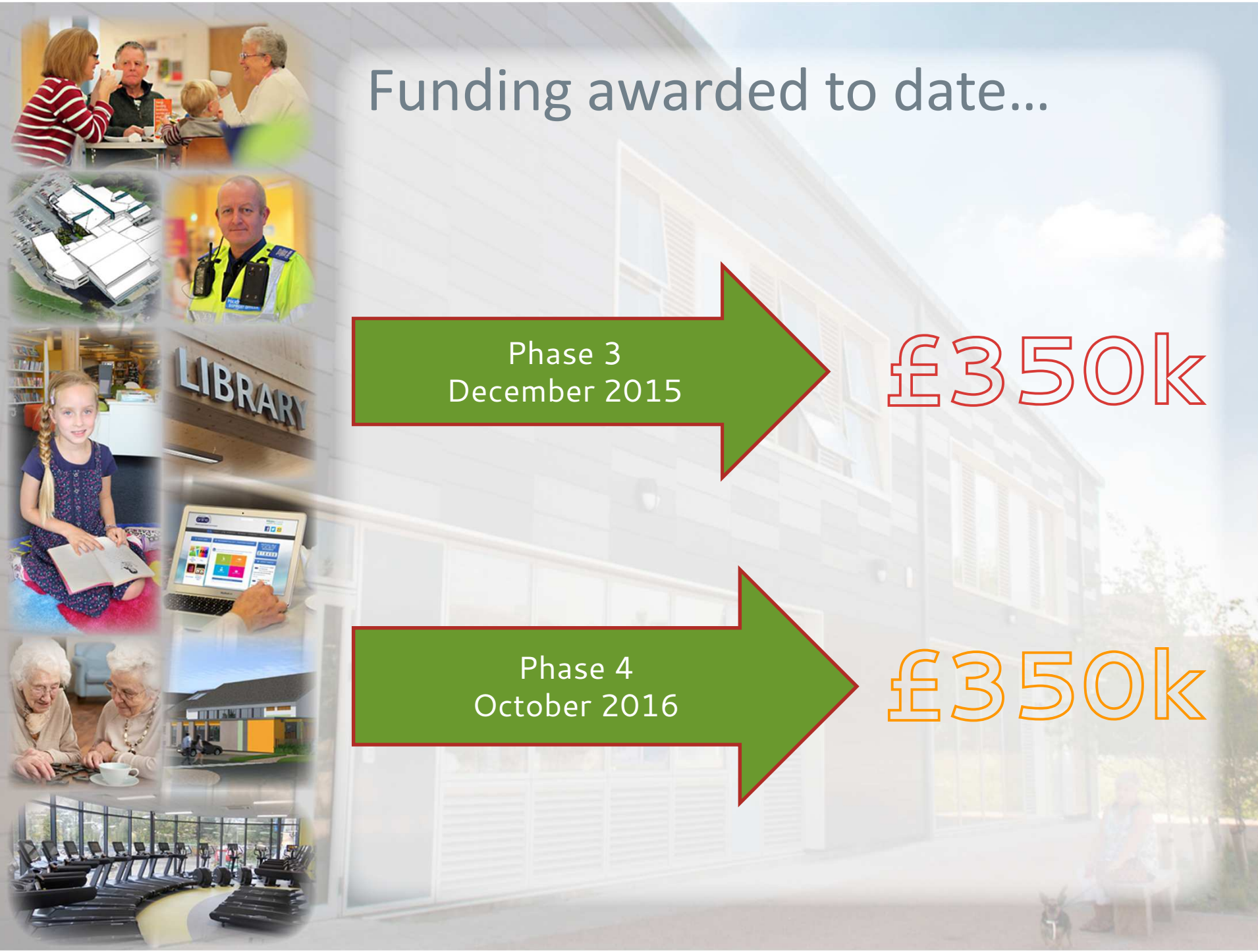
Funding awarded to date...

Phase 3
December 2015

£350k

Phase 4
October 2016

£350k



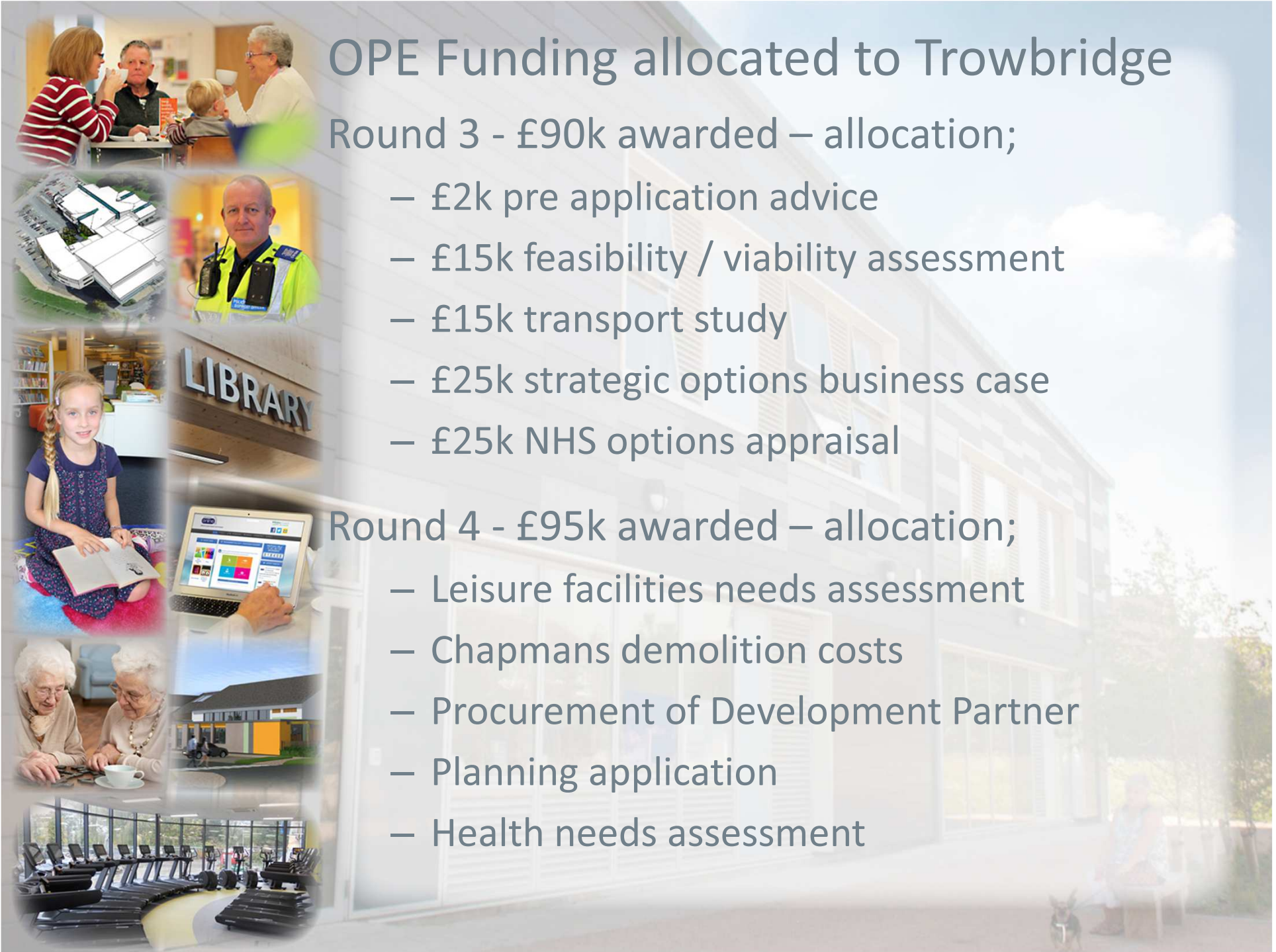
OPE Funding allocated to Trowbridge

Round 3 - £90k awarded – allocation;

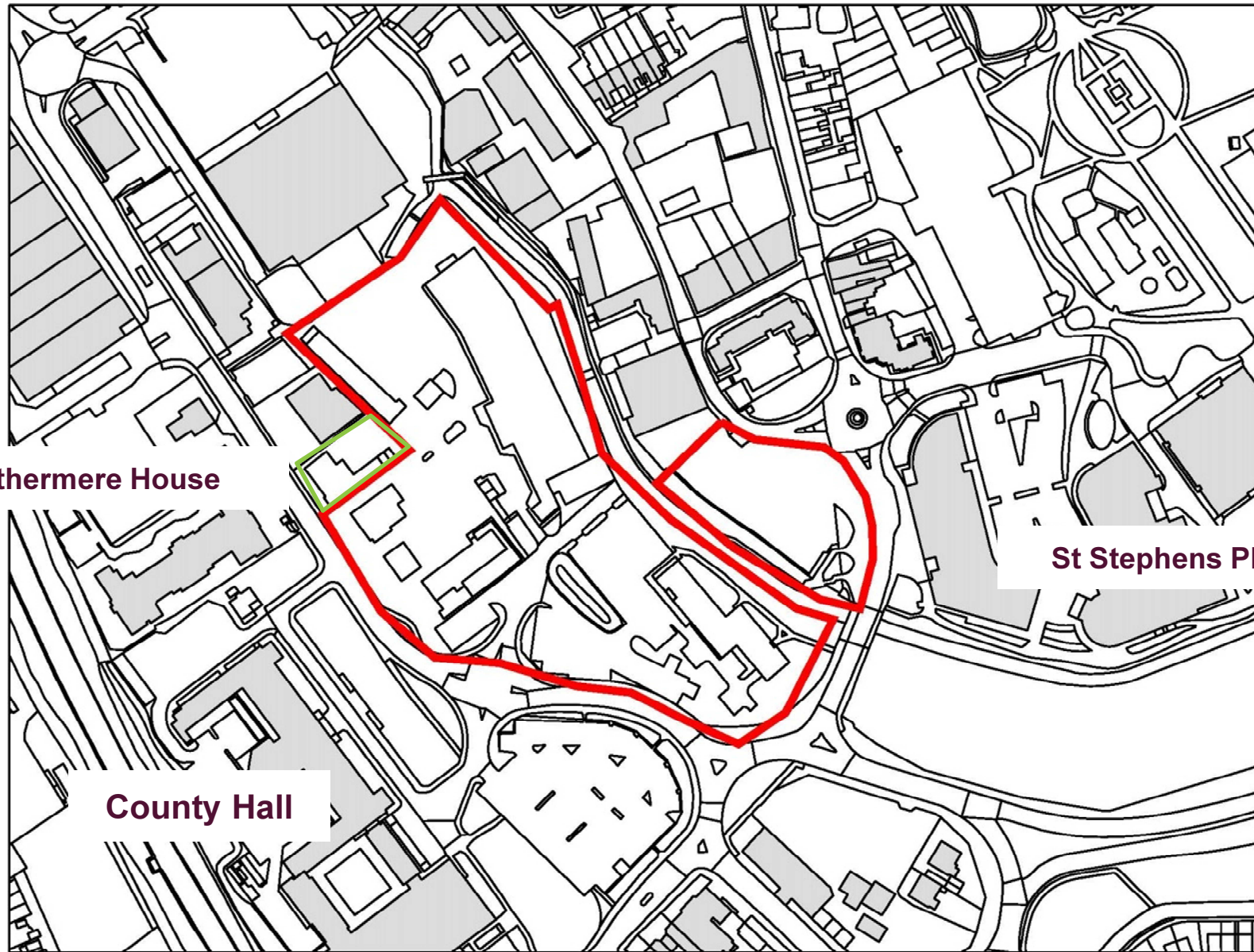
- £2k pre application advice
- £15k feasibility / viability assessment
- £15k transport study
- £25k strategic options business case
- £25k NHS options appraisal

Round 4 - £95k awarded – allocation;

- Leisure facilities needs assessment
- Chapmans demolition costs
- Procurement of Development Partner
- Planning application
- Health needs assessment



Focus on East Wing site



Rothermere House

St Stephens Place

County Hall

East Wing site - update

- Report to Capital Assets Committee - 15 November 2016
- Work programme endorsed
- Approval to purchase Rothermere House –(former Probation Service) building
- Probation relocated to County Hall
- Discussions with Sport England





East Wing site – indicative timeline

STAGE	TASKS	ESTIMATED TIMESCALES
Stage 1 Options development	Site appraisal Soft market testing Feasibility / viability testing indicators: <ul style="list-style-type: none"> • Residential / retirement • Health care • Leisure • Retail • Parking/transport 	Complete
Stage 2 Business case development *NHS CCG decision on healthcare requirements	Procure Strategic Outline Business Case Pre-procurement advice Pre-application advice Outline planning application Securing investment partners – establishment of external funding for viability of larger scale leisure (update due end of February)	November 2016 to April 2017



East Wing site – indicative timeline

STAGE	TASKS	ESTIMATED TIMESCALES
Stage 3 Procurement	Formal procurement to appoint a development partner Procurement phase to award contracts for construction works (Appointment subject to cabinet approval) Leisure needs assessment - Sport England	Next 6 months January – June 2017
Stage 4 Work starts	Preliminary works start on site	Autumn 2017

One Wiltshire Estate

Questions?



This page is intentionally left blank



Wiltshire College Update

Amanda Burnside
Principal



The College context

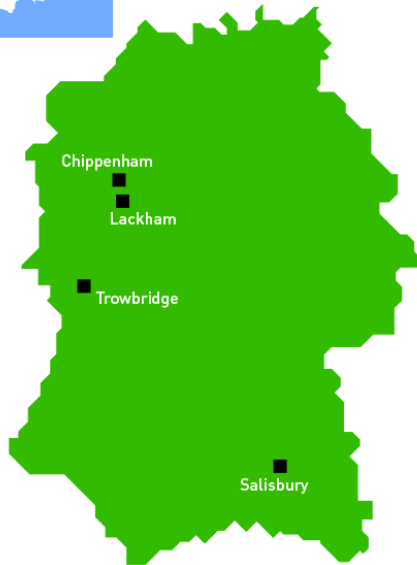


- New senior team and culture change from March 2014
- Ofsted June 2015 “A new spirit of pride and ambition”
- “Managers and staff now work together very effectively as one college”
- The way ahead – a clear vision (5 year strategic plan)
- The pursuit of excellence through:
 - Focus on teaching and learning
 - Focus on growth
 - Focus on engagement with key stakeholders
 - Development of new curriculum in line with employer demand





The College Estate



- 4 main campuses
- 3 outreach centres (Warminster, Devizes, Corsham)
- Castle Combe – BSc Motorsport Engineering





Our Portfolio

- Mixed vocational offer reflecting mixed economy in Wiltshire- entry level to level 3 – mainly 16-18 year olds
- Higher Education (HNDs/Degrees through University partnerships - University of Bath, Royal Agricultural University, University of Bournemouth, Greenwich University)
- Apprentices at all levels
- Pre 16 (part time from schools)
- Adult part time – fee paying courses (up to level 7)
- Employer Engagement and delivery in the workplace
- Military resettlement
- Joint Venture Company for Military Apprenticeships





Students

- 3,300 16-18 Full Time Students
- 7,500 part time 19+ students
- 600 HE students
- 850 apprentices
- £1m full cost courses
- £34 million turnover

*Making a significant contribution
to the region's economy*





Staff

- 930 staff
 - 750 are full-time
- A Major Employer*





Investing in the future

- Investment in estates and facilities in line with local growth priorities
- Growth potential at all 4 campuses (A350, A36 growth zones)
 - Salisbury and Lackham campuses – investment required to continue to deliver provision and to deliver the Local Enterprise Partnership (LEP) skills strategy. Business cases for capital investments being considered
 - Chippenham £21 million development opened for students November 2015



Chippenham



Page 46



© John Seaman Photography

Lackham



Salisbury



Trowbridge



Page 49



Construction Skills Centre Trowbridge



Page 50





The Regional Context

Employment Demand

- From 2010 to 2020 total employment in Wiltshire is projected to grow by 17,500 jobs = above average growth
- Significant occupational demands are expected to be for Professionals , Managers, Directors and Associate Professional and Technical occupations
- By 2020 it is projected that more than 1 in 4 jobs will be at the higher end (Level 3+)
- In Wiltshire the proportion of 25-29 year olds with degrees is 33.0% compared with 42.2% in England.
- *“ Swindon and Wiltshire Local Enterprise Partnership (SWLEP) is the only LEP without a university campus, emphasising the importance of further education providers delivering higher education to the area”*





The Regional Context: some key growth areas

- Life science sector: must increase vocational training including apprenticeships; technician level
- Advanced manufacturing (engineering): need for high-level technician and quality management skills - Levels 3 or 4.
- Tourism: skills shortages for chefs, customer service staff and hospitality management. Main growth: managerial
- 'Shortage' areas include construction and the health and care sectors
- ✓ *The College is developing curriculum in all these sectors*



The Regional Context



Swindon and Wiltshire Local Enterprise Partnership –Strategic Economic Plan

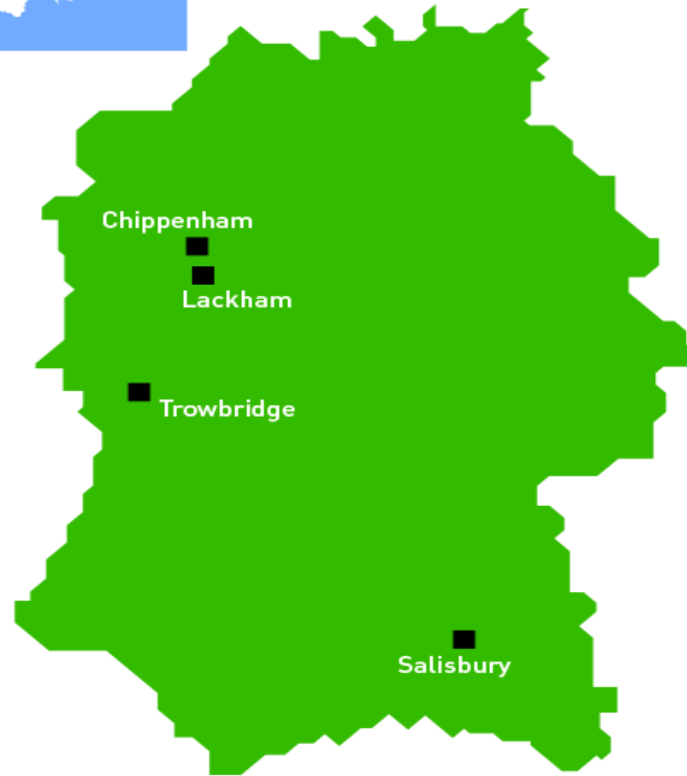
Three Growth zones:

- A350 corridor – Malmesbury, Corsham, Chippenham, Melksham and Trowbridge (electrification of the railway line –eventually!, new homes)
- South Wiltshire – Porton, Salisbury and Garrison Towns (military resettlement, creation of new jobs)
- Swindon including M4 corridor to Chippenham





Sited and poised to accommodate growth!





Apprenticeship Growth Potential

- Growing demand encouraged by government (3 million target)
- Relatively low numbers in Wiltshire
- College offer: All ages, all sectors, all levels –intermediate, advanced and higher
- 95% of College apprentices continue with employer





Accounting
Agriculture
Agricultural Engineering
Animal Care
Beauty Therapy
Bricklaying
Business Administration
Carpentry and Joinery
Catering
Childcare
Construction Plant Maintenance
Creative
Customer Service
Design
Design Support
Electrical Installation

Electrotechnical
Engineering
Equine
Game keeping
Hairdressing
Health and Social Care
Horticulture
Hospitality
Improving Operational Performance
IT Professional
Management & Team Leading
Manufacturing
Painting and Decorating
Plant Maintenance
Plumbing and Heating

Retail
Sales & Telesales
Supporting Teaching and Learning
Vehicle Maintenance – Light Vehicle
Vehicle Maintenance - Heavy Vehicle
Veterinary Nursing
Vehicle Maintenance - Motorcycle
Warehousing





What next?

- ✓ Journey to outstanding continues
- ✓ 5 year strategic plan/investment in estate
- ✓ Engagement with employers and employer engagement in curriculum development essential for success and already paying dividends
- ✓ Apprenticeship and Higher Education/higher level growth a priority but must also grow the supply route
- ✓ Increasing engagement with schools
- ✓ Must address priority areas for growth in our region – advanced construction, engineering, life sciences, land based, health and care etc
- ✓ Increasing engagement with the military
- ✓ Listening and being innovative

Wiltshire College of significant strategic importance to delivering economic growth in the region



Our mission



A vital player in Wiltshire's economic growth, raising skills and attainment, delivering excellence and innovation; inspiring people to achieve.





Questions

amanda.burnside@wiltshire.ac.uk



This page is intentionally left blank



Community Engagement Update

Outcomes from JSA event

- **Recommended priorities for action**
- **Older people- dementia, social isolation, carers needs**
- **Culture- broadening participation, more affordable access to arts and cultural activities**
- **Health- Physical activity and healthier lifestyles**
- **Transport- speeding traffic and road safety**

Outcomes from JSA event

- **Environment-** promoting community litter picking and anti dog fouling campaign
- **Community Safety-** Anti-social behaviour, road safety
- **Economy-** training and skills, infrastructure and planning
- **Children and Young People-** child obesity mental health, access to facilities
- **Community and housing,** diversity and equality, participation and volunteering

Initiatives in progress-

Page 64

Become a Dementia Friend

Dementia Friends gives people an understanding of dementia and the small things you can do that make a difference - please join us.

DATE: Monday 08 February 2016
START TIME: 6.30pm
END TIME: 8.00pm
DURATION: 1 hour
VENUE: Cotswold Square, County Hall, Trowbridge

WHEELCHAIR ACCESSIBLE? Yes

OTHER INFORMATION: An information session for anyone wanting to know more about dementia

NAME: Mary Cullen

CONTACT DETAILS: mary.cullen@wiltshire.gov.uk
Tel: 01299 378888

dementiafriends.org.uk @DementiaFriends /DementiaFriends

Alzheimer's Society

- Health and Wellbeing Group
- Building on Dementia Friendly Trowbridge priority
- Becoming a Dementia Action Alliance
- Dementia Friends Champions Training

- Safer Communities Group
- Revisiting Safe Places

- Intergenerational project
- Men's Shed
- Grants, issues, CATG, newsletter



Working with local communities 2012 - 2016 and looking ahead to 2017

Page 65



A Legacy for Wiltshire 2012 – 2016

Film



CLEAN FOR THE QUEEN

Thank you for working with your communities on the Clean for The Queen litter pick events in 2016

They were a huge success

- Over 70 litter picks took place over the Clean for The Queen weekend in March 2016 across the county
- 1,400 volunteers took part
- 14 tonnes of rubbish was collected
- Wiltshire was the second most successful litter pick in the country (London was first)

The Great British Spring Clean

- Keep Britain Tidy has launched its biggest-ever litter campaign - the first Great British Spring Clean
- Communities encouraged make their neighbourhood one they can be proud of
- The Spring Clean takes place from Friday 3 - Sunday 5 March 2017
- As a area board working with our local town and parish councils how clean can we be?



Wiltshire Council
Where everybody matters

How can you get involved?

- Identify the area that needs to be cleaned or cleared
- Talk to community groups and friends, family, colleagues and ask them to participate and get involved
- Confirm the date and time of your local event
- Contact your CEM to register your event and seek assistance



Other community events and activities in 2017

- The Big Pledge - London Calling
- Healthy Schools initiative
- World War One commemorations

- Details and tool kits for the above events and activities will be available shortly...